

Intent of Use

Range of Fasteners

nG2 is a hydro-pneumatic tool designed to place Avdel® breakstem fasteners at high speed making it ideal for batch or flow-line assembly in a wide variety of applications throughout all industries. It can place all fasteners listed opposite.

The tool features a vacuum system for fastener retention and trouble free collection of the spent stems regardless of tool orientation.

A complete tool is made up of three separate elements which will be supplied individually. See diagram below.

If you wish to place most of the fasteners in the table opposite, you can order the 71213-00039 complete tool comprising of:

- 71213-02000 base tool
- 71213-15000 nose assembly
- Nose tips 71210-05002, 71210-16070 and 07381-04701. Fit nose tip as indicated pages 9 to 12.

You can order the above three nose tips and nose assembly as a nose assembly kit part number 71213-15100.

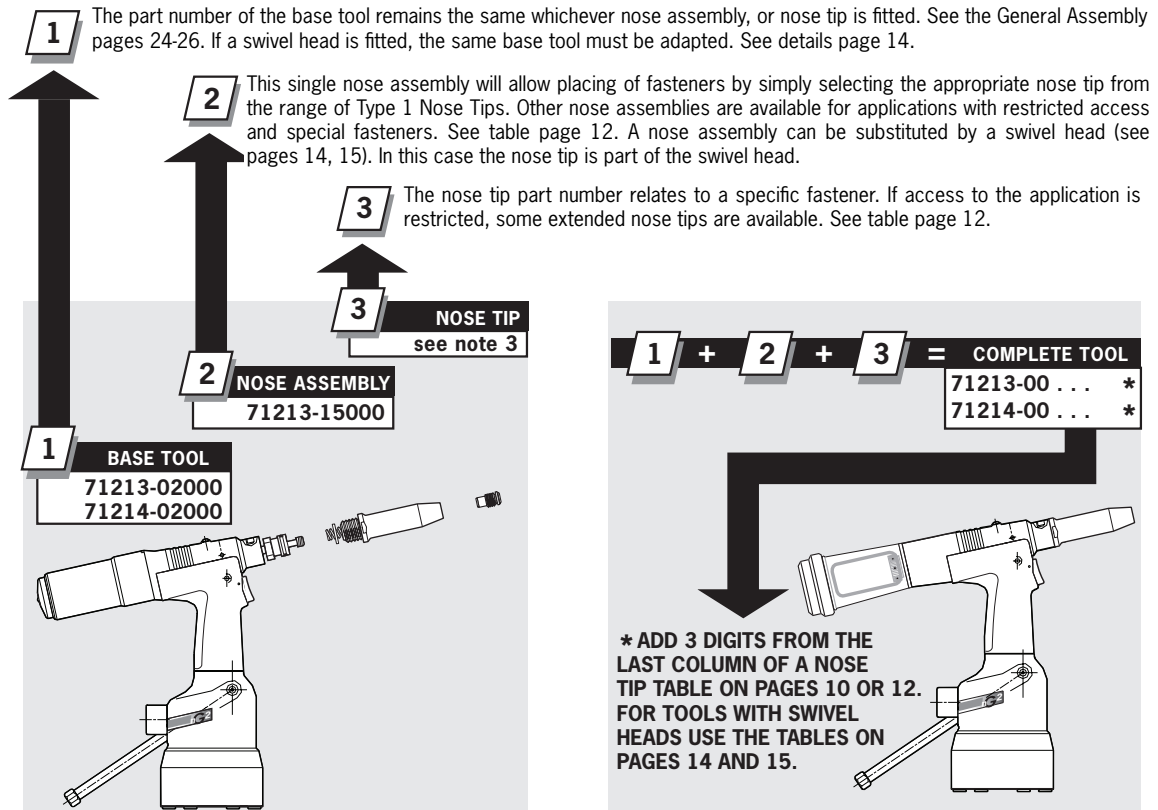
- For some fasteners the base tool, nose assembly and nose tip must be ordered separately.

NOSE EQUIPMENT MUST BE FITTED AS DESCRIBED ON PAGE 9.

FASTENER NAME	FASTENER SIZE ($\frac{MM}{IN}$)									
	3	3.2	4.0	4.3	4.8	5	5.2	6	6.5	7
	-	$\frac{1}{8}$	$\frac{5}{32}$	-	$\frac{3}{16}$	-	-	-	-	-
AVEX®	●	●	●		●					
STAVEX®		●	●		●					
AVINOX®II		●	●		●					
AVIBULB®		●	●		●					
ETR							●			
BULBEX®			●		●					
AVDEL® SR		●	●		●					
MONOBOLT®					●					
INTERLOCK®					●					
*AVSEAL® II			●			●		●	●	●
Q RIVET		●	●		●					
KLAMP-TITE®					●					
KLAMP TITE KTR®					●					

*For Avseal® equipment refer to separate Data Sheet 07900-00840

Part Numbering



Nose Assemblies

Nose Tips

IMPORTANT

Nose assemblies do NOT include nose tips. Nose tips must be ordered separately.

A tool (except part number 71213-00039) must always be fitted with the correct nose assembly and nose tip for your fastener but if you wish to order a nose assembly or a nose tip separately, refer to the 'NOSE TIPS' tables below and on page 12.

If your application presents no access restriction use a Type '1' Nose Tip.

Dimensions 'A' and 'B' below will help you assess the suitability of a particular nose tip.

You should also check that the dimensions of the nose casing will not restrict access to your application. If access is restricted Type '2' Nose Tips are available for some fasteners. Refer to the table page 12.

It is essential that nose assembly and nose tip are compatible with the fastener prior to operating the tool. If you have ordered a 71213-00039 complete tool, it is important that you check that the nose tip already fitted to the nose assembly is the correct one to place your fastener by sliding the fastener stem into the nose tip. No force should be required and play should be minimal.

Swivel heads are available as an alternative to nose assemblies when further reach is required. See pages 14-16 in the 'Accessories' section.

TYPE 1 NOSE TIPS

¹ In inches then in millimetres.
² Head forming nose tips for use with countersunk heads ONLY.
³ Long nose tip for deep placing.

*Complete tool part number 71213-00039 or 71214-00039 does not only include the 71213-15000 nose assembly below but also the following three nose tips: 71210-05002, 71210-16070 and 07381-04701 making up a nose assembly kit part number 71213-15100. Use the nose tip listed in the table.

* Items 3-11 available as cartridge assembly 71213-20320

NOSE ASSEMBLY
part n° 71213-15000
 (+ 3 nose tips above = 71213-15100)

ITEM	DESCRIPTION	PART N°
1	TAPERED NOSE CASING	71213-00350
2	'O' RING	07003-00067
3	JAW HOUSING - TAPERED	71210-15902 *
4	JAW	71210-15001 *
5	JAW SPREADER	07498-04502 *
6	BUFFER	71210-05001 *
7	SPRING	07500-00418 *
8	LOCKING RING	07340-00327 *
9	JAW SPREADER HOUSING 'T'	71210-20321 *
10	DETENT SLEEVE	71210-20322 *
11	'O' RING	07003-00277 *

NAME	FASTENER		MATERIAL	NOSE TIP (mm)		see below	
	Ø ¹			PART N°	'A'		'B'
AVEX®	1/8	3.2	Al Alloy	71210-05002	12.7	4.8	... 039*
	1/8	3.2	Steel	71210-16070	12.7	3.3	... 039*
	1/8	3.2	Al Alloy	07340-06401 ²	12.7	2.9	... 003
	-	3.0	Al Alloy	71210-05002	12.7	4.8	... 039*
	5/32	4.0	Al Alloy	71210-16070	12.7	3.3	... 039*
	5/32	4.0	Steel	07381-04701	12.7	2.8	... 039*
	5/32	4.0	Al Alloy	07340-06501 ²	12.7	3.3	... 009
	3/16	4.8	Al Alloy	07381-04701	12.7	2.8	... 039*
	3/16	4.8	Al Alloy	07340-04800	19.0	3.3	... 016
	3/16	4.8	Steel	07490-04401	12.7	3.3	... 017
	3/16	4.8	Al Alloy	07340-06601 ²	12.7	4.1	... 015
	MONOBOLT®	3/16	4.8	Any	71210-16020	12.7	4.1
BULBEX®	5/32	4.0	Al Alloy	71210-16070	12.7	3.3	... 039*
	3/16	4.8	Al Alloy	07381-04701	12.7	2.8	... 039*
AVINOX® II	1/8	3.2	Stainless Steel	71210-16070	12.7	3.3	... 039*
	5/32	4.0	Stainless Steel	07381-04701	12.7	2.8	... 039*
	3/16	4.8	Stainless Steel	07498-01401	12.7	4.8	... 082
T-LOK®	-	4.3	Steel	07340-06201	12.7	3.3	... 120
	3/16	4.8	Steel	07340-06201	12.7	3.3	... 120
AVIBULB®	1/8	3.2	Steel	71210-16070	12.7	3.3	... 039*
	5/32	4.0	Steel	07381-04701	12.7	2.8	... 039*
	3/16	4.8	Steel	07498-01401	12.7	4.8	... 082
AVDEL® SR	1/8	3.2	Any	71210-05002	12.7	4.8	... 039*
	5/32	4.0	Any	71210-16070	12.7	3.3	... 039*
	3/16	4.8	Any	07348-07001 ⁴	12.7	5.7	... 062
	3/16	4.8	Any	71210-16050 ⁵	12.7	5.7	... 064
INTERLOCK®	3/16	4.8	Any	07381-04701	12.7	2.8	... 039*
STAVEX®	1/8	3.2	Steel	71210-16070	12.7	3.3	... 039*
	5/32	4.0	Steel	07381-04701	12.7	2.8	... 039*
	3/16	4.8	Steel	07381-04701	12.7	2.8	... 039*
	3/16	4.8	Steel	07340-04800	19.0	3.3	... 016
	3/16	4.8	Steel	07381-04701	12.7	2.8	... 039*
	1/8	3.2	Stainless Steel	71210-16070	12.7	3.3	... 039*
Q RIVET	5/32	4.0	Stainless Steel	07381-04701	12.7	2.8	... 039*
	3/16	4.8	Any	07340-06201	12.7	3.3	... 120
	3/16	4.8	Any	07340-06201	12.7	3.3	... 120
KLAMPTITE KTR®	3/16	4.8	Al Alloy	71220-16060	12.7	4.8	... 430
KLAMP-TITE®	3/16	4.8	Al Alloy	07381-04701	12.7	2.8	... 039*

COMPLETE TOOL
PART NUMBER :
 precede with 71213-00
 or 71214-00.
 * See top left

Nose Assemblies

Nose Tips

To fit Nose Tips Type 2 remove Male 'T' Adaptor **41** and replace with Jaw Spreader Housing **9*** and 'O' Ring **10***.

**TYPE 2
NOSE TIPS**

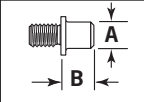
**NOSE ASSEMBLY
part n° 71210-15200**

ITEM	DESCRIPTION	PART N°
1	NOSE CASING	07340-02804
2	'O' RING	07003-00067
3	JAW HOUSING	07340-00304
4	JAWS	71210-15001
5	JAW SPREADER	07498-04502
6	BUFFER	71210-05001
7	SPRING	07500-00418
8	LOCKING RING	07340-00327
9	JAW SPREADER HOUSING	71210-02101
10	'O' RING	07003-00277

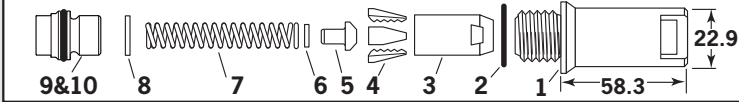
NAME	FASTENER		NOSE TIP (mm)			see below	
	Ø ¹	MATERIAL	PART N°	'A'	'B'		
AVEX®	1/8	3.2	Aluminium Alloy	07340-02805	9.5	12.95	... 0 0 2
	1/8	3.2	Steel	07340-02806	9.5	11.4	... 0 0 8
	5/32	4.0	Aluminium Alloy	07340-02806	9.5	11.4	... 0 0 8
	5/32	4.0	Steel	07340-02807	12.7	10.0	... 0 1 4
	3/16	4.8	Aluminium Alloy	07340-02807	12.7	10.0	... 0 1 4
BULBEX®	3/16	4.8	Steel	07340-07301	12.7	11.8	... 0 1 8
	5/32	4.0	Aluminium Alloy	07340-02806	9.5	11.4	... 0 0 8
T-LOK®	3/16	4.8	Aluminium Alloy	07340-02807	12.7	10.0	... 0 1 4
	-	4.3	Steel	07241-07101	12.7	10.0	... 1 2 1
STAVEX®	3/16	4.8	Steel	07241-07101	12.7	10.0	... 1 2 1
	1/8	3.2	Steel	07340-02806	9.5	11.4	... 0 0 8
AVIBULB®	5/32	4.0	Steel	07340-02807	12.7	10.0	... 0 1 4
	3/16	4.8	Steel	07340-02807	12.7	10.0	... 0 1 4
	1/8	3.2	Stainless Steel	07340-02806	9.5	11.4	... 0 0 8
	5/32	4.0	Stainless Steel	07340-02807	12.7	10.0	... 0 1 4
	3/16	4.8	Stainless Steel	07340-02807	12.7	10.0	... 0 1 4
E.T.R	-	5.2	Steel/Brass	07340-02807	12.7	10.0	... 0 1 4

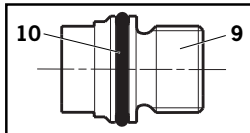
¹ In inches then in millimetres.

TYPE 2 NOSE TIPS ARE EXTENDED TO ALLOW ACCESS INTO APPLICATIONS WHERE TYPE 1 NOSE TIPS WILL NOT REACH.



COMPLETE TOOL PART NUMBER : precede with 71213-00 or 71214-00





Remove Male 'T' Adaptor **41** from the Tool (see page 11) and replace with Jaw Spreader Housing **9*** (71210-02101) and 'O' Ring **10***.

9* and **10*** refer to the illustrations on this page.

Accessories

Swivel Heads

IMPORTANT

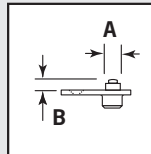
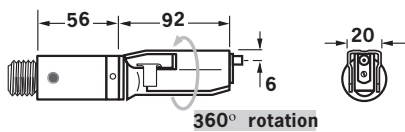
PRIOR to fitting a swivel head, the base tool must be adapted. See Preparing the Base Tool opposite. In contrast to nose assemblies part numbers of swivel heads do INCLUDE a nose tip as shown below.

Swivel heads are supplied separately for fitting to a base tool forming a complete tool. See table below for part numbers. Jaws and nose tips vary depending on the fastener to be placed but all other components remain the same within each type of swivel head. See the 'capability' tables below and page 15. For the 'Constant Components' table see page 17.

'A' and 'B' dimensions will help you assess the accessibility of your application.

STRAIGHT SWIVEL HEAD capability

NAME	FASTENER		SWIVEL HEAD PART N°	NOSE TIP (mm)			JAWS PART N°	see below
	Ø ¹	MATERIAL		PART N°	'A'	'B'		
AVEX®	1/8 : 3.2	Al Alloy	07345-03000	07345-03600	7.87	3.81	07340-00213	... 001
	1/8 : 3.2	Steel	07345-03100	07345-03700	7.87	3.81	07340-00213	... 004
	5/32 : 4.0	Al Alloy	07345-03100	07345-03700	7.87	3.81	07340-00213	... 004
	5/32 : 4.0	Steel	07345-03200	07345-03800	7.87	3.81	07490-04602	... 010
	3/16 : 4.8	Al Alloy	07345-03200	07345-03800	7.87	3.81	07490-04602	... 010
BULBEX®	5/32 : 4.0	Al Alloy	07345-03100	07345-03700	7.87	3.81	07340-00213	... 004
	3/16 : 4.8	Al Alloy	07345-03200	07345-03800	7.87	3.81	07490-04602	... 010
AVINOX® II	1/8 : 3.2	Stainless Steel	07345-03100	07345-03700	7.87	3.81	07340-00213	... 004
	5/32 : 4.0	Stainless Steel	07345-03200	07345-03800	7.87	3.81	07490-04602	... 010
AVSEAL® II	- : 4	Al Alloy	71213-06000	71213-16401	6.35	1.95	07340-00213	... 160
	- : 4	Al Alloy	71213-06600	71213-16402 ²	6.35	4.11	07340-00213	... 180
	- : 5	Al Alloy	71213-06100	71213-16403	7.62	2.00	07340-00213	... 161
	- : 5	Al Alloy	71213-06700	71213-16404 ²	7.62	4.11	07340-00213	... 181
STAVEX®	1/8 : 3.2	Steel	07345-03100	07345-03700	7.87	3.81	07340-00213	... 004
	5/32 : 3.2	Steel	07345-03200	07345-03800	7.87	3.81	07490-04602	... 010
	1/8 : 3.2	Stainless Steel	07345-03100	07345-03700	7.87	3.81	07340-00213	... 004
	5/32 : 4.0	Stainless Steel	07345-03200	07345-03800	7.87	3.81	07490-04602	... 010



COMPLETE TOOL PART NUMBER :
precede with 71213-30 or 71214-30
(the stop nut and safety cap are included)

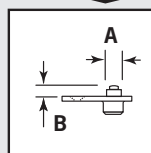
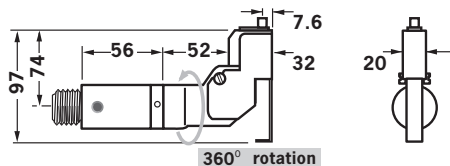
IMPORTANT: in contrast to complete tools with nose assemblies, those fitted with swivel heads include the nose tip as a part of the head.

¹ In inches then in millimetres.

² Long nose tip for deep placing.

RIGHT-ANGLE SWIVEL HEAD capability

NAME	FASTENER		SWIVEL HEAD PART N°	NOSE TIP (mm)			JAWS PART N°	see below
	Ø ¹	MATERIAL		PART N°	'A'	'B'		
AVEX®	1/8 : 3.2	Aluminium Alloy	07346-03000	07345-03600	7.87	3.81	07340-00213	... 001
	1/8 : 3.2	Steel	07346-03100	07345-03700	7.87	3.81	07340-00213	... 004
	5/32 : 4.0	Aluminium Alloy	07346-03100	07345-03700	7.87	3.81	07340-00213	... 004
	5/32 : 4.0	Steel	07346-03200	07345-03800	7.87	3.81	07490-04602	... 010
	3/16 : 4.8	Aluminium Alloy	07346-03200	07345-03800	7.87	3.81	07490-04602	... 010
BULBEX®	5/32 : 4.0	Aluminium Alloy	07346-03100	07345-03700	7.87	3.81	07340-00213	... 004
	3/16 : 4.8	Aluminium Alloy	07346-03200	07345-03800	7.87	3.81	07490-04602	... 010
AVINOX® II	1/8 : 3.2	Stainless Steel	07346-03100	07345-03700	7.87	3.81	07340-00213	... 004
	5/32 : 4.0	Stainless Steel	07346-03200	07345-03800	7.87	3.81	07490-04602	... 010
AVSEAL® II	- : 4	Aluminium Alloy	71213-04000	71213-16401	6.35	1.95	07340-00213	... 160
	- : 4	Aluminium Alloy	71213-04700	71213-16402 ²	6.35	4.11	07340-00213	... 180
	- : 5	Aluminium Alloy	71213-04100	71213-16403	7.62	2.00	07340-00213	... 161
	- : 5	Aluminium Alloy	71213-04800	71213-16404 ²	7.62	4.11	07340-00213	... 181
STAVEX®	1/8 : 3.2	Steel	07346-03100	07345-03700	7.87	3.81	07340-00213	... 004
	5/32 : 4.0	Steel	07346-03200	07345-03800	7.87	3.81	07490-04602	... 010
	1/8 : 3.2	Stainless Steel	07346-03100	07345-03700	7.87	3.81	07340-00213	... 004
	5/32 : 4.0	Stainless Steel	07346-03200	07345-03800	7.87	3.81	07490-04602	... 010

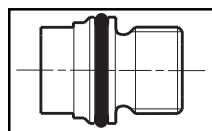


COMPLETE TOOL PART NUMBER :
precede with 71213-40 or 71214-40
(the stop nut and safety cap are included)

IMPORTANT: in contrast to complete tools with nose assemblies, those fitted with swivel heads include the nose tip as a part of the head.

¹ In inches then in millimetres.

² Long nose tip for deep placing.



Remove Male 'T' Adaptor **41** from the Tool (see page 11) and replace with Jaw Spreader Housing (71210-02101).